




Intrabone transplant provides full stemness of cord blood stem cells with fast hematopoietic recovery and low GVHD rate: results from a prospective study

Francesca Bonifazi¹  · Elisa Dan¹ · Myriam Labopin² · Mariarosaria Sessa¹ · Viviana Guadagnuolo¹ · Martina Ferioli¹ · Simonetta Rizzi¹ · Sabrina De Carolis³ · Barbara Sinigaglia¹ · Maria Rosa Motta¹ · Andrea Bontadini⁴ · Valeria Giudice⁵ · Giovanni Martinelli⁶ · Mario Arpinati¹ · Michele Cavo^{1,3} · Massimiliano Bonafé^{3,6} · Gianluca Storci^{3,7}

Received: 8 May 2018 / Revised: 12 August 2018 / Accepted: 19 August 2018 / Published online: 19 September 2018
© The Author(s) 2018. This article is published with open access

Abstract

Umbilical Cord Blood (UCB) represents a valid option for patients with hematopoietic malignancies lacking an HLA matched donor. To overcome the limitation of the low stem cell dose of UCB, the intrabone (IB) route has been proposed. We report the results of a prospective study on a poor-prognosis cohort of 23 patients receiving intrabone single UCB transplant (Clinicaltrials.gov NCT00886522). Cumulative incidence of hematological recovery at day 90 was $82 \pm 9\%$ ($\text{ANC} > 0.5 \times 10^9/\text{L}$) and $70 \pm 10\%$ (platelet $> 50 \times 10^9/\text{L}$) and correlated with CD34^+ cells in the graft. NRM was $20 \pm 9\%$. No severe aGVHD and only one extensive cGVHD occurred, with fast immune reconstitution. To test the hypothesis that the direct IB injection could affect the expression of stem cells regulatory pathways, CD34^+ cells from BM aspirates at day + 10, + 20, + 30, processed in hypoxic conditions mimicking the BM-microenvironment ($7\% \text{pO}_2$), were studied for the expression of c-Mpl, Notch1 and CXCR4. We found that the expression of c-Mpl in CD34^+ cells at day + 10 significantly correlated with hematological recovery. In conclusion, IB-UCB transplant success is associated with low incidence of GVHD and high-speed platelet recovery; intrabone route may preserve full hematopoietic stemness by direct delivery of UCB stem cells into the hypoxic HSC niche.

These authors contributed equally: Massimiliano Bonafé, Gianluca Storci

Electronic supplementary material The online version of this article (<https://doi.org/10.1038/s41409-018-0335-x>) contains supplementary material, which is available to authorized users.

- ✉ Francesca Bonifazi
francesca.bonifazi@unibo.it
- ✉ Massimiliano Bonafé
massimiliano.bonafe@unibo.it

- ¹ Institute of Hematology “L. and A. Seràgnoli”, University Hospital S. Orsola-Malpighi, Bologna, Italy
- ² Hôpital Saint-Antoine 184 rue du Faubourg Saint-Antoine, 75571 Paris Cedex 12, Paris, France
- ³ DIMES, Department of Experimental, Diagnostic and Specialty

Introduction

Umbilical Cord Blood (UCB) represents a valid option for patients needing an allotransplant but lacking a HLA matched donor. Despite the clear evidence of its efficient anti-leukemic effect [1], delayed engraftment with relatively high non-relapse mortality (NRM) remains the major obstacle to UCB transplant in the adult. Several strategies have been proposed to overcome this limitation, which is

- Medicine, University of Bologna, Bologna, Italy
- ⁴ Immunogenetics, University Hospital S. Orsola-Malpighi, Bologna, Italy
- ⁵ Apheresis Unit, University Hospital S. Orsola-Malpighi, Bologna, Italy
- ⁶ Biosciences Laboratory, Istituto Scientifico Romagnolo per lo Studio e la Cura dei Tumori (IRST) IRCCS, Meldola, Italy
- ⁷ Interdepartmental Center “Luigi Galvani”, CIG, University of Bologna, Bologna, Italy

likely due to the low hematopoietic stem cell (HSC) dose. Double UCB transplant, one of the most popular option currently used to ameliorate the speed of engraftment, failed to demonstrate formal proof of superiority [2]. Further approaches emerged, such as ex-vivo UCB expansion by means of the administration of cytokines [3], Notch ligands [4], nicotinamide [5] or mesenchymal cells co-culture [6]. Factors other than the cell dose, such as HLA mismatches [7] and the presence of pre-transplant donor-specific anti-HLA antibodies [8], affect UCB engraftment. An alternative approach is to increase the seeding efficiency by bringing more cells to the physiologic place, i.e. the hematopoietic *niche*, as it occurs in direct intrabone (IB) injection of UCB [9]. IB transplant has been safely applied to adult patients with impressive effects on platelet recovery, which is a surrogate marker of transplant outcome. Speculatively, the injection of UCB HSC into the **bone marrow** (BM) exposes the cells directly to beneficial stimuli provided by the HSC-niche, such as components of the c-Mpl/TPO, Notch/Jagged1, CXCR4/SDF1 receptor/ligand systems [10–12], as well as low pO₂ level [13]. In principle, all the above HSC niche cues potentially empower UCB-HSC capability to recover hematopoiesis [14, 15]. Here we report on a prospective clinical trial (NCT00886522) on patients with very advanced hematological malignancies who underwent allogeneic transplant with one UCB unit given via IB route. Moreover, we show evidence that c-mpl expression in post-transplant CD34 + cells associates with hematopoietic recovery after IB-UCB. Moreover, because we here found that the level of c-Mpl in CD34 + is higher under hypoxic conditions, we surmise that the direct injection of CD34 + in the hypoxic HSC niche may contribute to the success of the IB- procedure.

Methods

Study design

This is a single-center, non-randomized, open-label, phase 2 clinical study (Clinicaltrials.gov NCT00886522). The primary endpoint of the study was the rate of hematologic engraftment. The sample size calculation (Fleming's single step procedure) was made setting the minimum proportion of patients with engraftment at day + 42 for not abandoning the study (p_0) = 60% and proportion of patients needed to test the main hypothesis in a phase III study (p_1) = 90%. A minimum of 17 patients were needed. The study was approved by the local Ethics Committee (152/2008/U/Sper). All patients signed a written informed consent. All the authors had access to primary clinical data. Inclusion criteria were: adult patients (18–65 years) suffering from high-risk hematological malignancies, lacking a sibling or an

unrelated adult HLA identical donor, receiving a myeloablative conditioning regimen (either busulfan or TBI based conditioning) and graft-vs-host disease (GVHD) prophylaxis with Ciclosporin-A, Micophenolate-Mofetile and 15–30 mg/kg (total dose) of anti-lymphoglobulin (ATLG, Grafalon®, NEOVII Biotech, Gräfelfing, Germany), given from day –6 to –2. Advanced phase or active disease at transplant and previous autologous and/or allogeneic transplants were not exclusion criteria. UCB units were selected according to the HLA minimum standard criteria of the Italian Bone Marrow Donor Registry (<http://ibmdr.galliera.it/standard-ibmdr/cosa-sono-gli-standard-operativi-ibmdr>) and contained a minimum of 1.5×10^7 /kg nucleated cells.

Hematological recovery, acute and chronic GVHD were graded according to standard criteria. The patients were also evaluated for the immunological recovery after transplant by FACS analysis for CD3, CD4, CD8, CD56, CD19 positive cells and for CD34 and c-mpl expression.

Intrabone infusion

The selected UCB units were rapidly thawed, washed and re-suspended in albumine-dextran solution as previously described [9]. The recovery of cells after thawing is reported in Supplementary Table I. Infusion was preceded by the administration of analgo-sedation (remifentanyl alone or associated with continuous infusion of propofol or midazolam), in the operating room. After the washing procedure, UCB unit was injected directly in the posterior superior iliac crests of the patients lying on a side, after few minutes from the end of the thawing procedure, the content of each syringe was 5–6 ml injected slowly (1–2 min). The procedure, repeated 4–6 times, lasted overall 20–30 min. Thereafter patients were reallocated to their standard single, air-positive pressure rooms with HEPA-filtered air, until discharge.

In vitro studies

CD34 + cells were immuno-magnetically separated (CD34 Microbeads Kit, Milteny Biotech, GmbH, Germany) from 11 patients undergoing BM aspirates at 3 time points (day + 10, + 20, + 30) after IB-UCB transplant. CD34 + cells separation was performed under a BM-mimicking pO₂ concentration (7%pO₂ [16]) generated in a hypoxia cabinet (In vivo300, Ruskinn®, Ruskinn Technology, United Kingdom). The above level of pO₂ was extremely similar to our measurements of pO₂ of 11 BM samples obtained by means of blood-gas analysis syringe, i.e., 7.5% pO₂ + 1.3% pO₂ (Supplementary Figure 1A). Post-transplant CD34 + cells mRNA expression was evaluated by real time PCR in iCycler iQ™ Real-Time PCR Detection System (Applied

Biosystems, Carlsbad, CA, USA). Each sample was analyzed in triplicate. Sets of primers and fluorogenic probes specific for c-Mpl, Notch-1 and CRCX4 mRNAs were purchased from Applied Biosystems. The reactions were incubated at 50 °C for 2 min; 95 °C for 15 min followed by 45 cycles of 95 °C for 15 s and 60 °C for 1 min. The relative amount of the target mRNA was calculated equal to $2^{-(\Delta\text{Ct target mRNA} - \Delta\text{Ct control})}$, using human β -glucuronidase mRNA as control. All the values were normalized over a sample of normal BM CD34 + cells and expressed as fold increase. The logarithm of $\Delta\Delta\text{Ct}$ was used to normalize the distribution.

Statistical analysis

Survival plots were obtained according to Kaplan–Meyer method. NRM, relapse incidence and hematological recovery were calculated by cumulative incidence method with death or second transplant being considered as competing risks. Multivariate analysis of censored data was performed by Cox regression model. Variables analyzed in univariate analysis were: phase, age, ATLG, infused total nucleated cells, CD34 + and CD3 + cells. The variables resulting in a p -value > 0.2 were then included in multivariate analyses. All tests were two sided with type I error fixed at 0.05. Statistical analyses were performed with SPSS 19 (SPSS Inc, Chicago, IL, USA) and R 2.13.2 (R Development Core Team, Vienna, Austria) software packages.

Results

Characteristics of patients are reported in Table 1. No severe adverse events related to IB infusion were recorded and the IB-UCB infusion were well tolerated. The median volume injected IB was 27.6 ml (range: 19.0–58.2 ml) via 5 injections in the posterior iliac crests. All patients engrafted but two, who were both re-transplanted with a second IB-UCB unit: one, a non-Hodgkin lymphoma died of aplasia at day 25; the other was a patient with refractory acute myeloid leukemia, engrafted the second IB-UCB transplant, achieving a complete remission that lasted 11 months. Cumulative incidence of hematological recovery (ANC $> 0.5 \times 10^9/\text{L}$, platelet $> 20 \times 10^9/\text{L}$ and $> 50 \times 10^9/\text{L}$) at day 90 were $82 \pm 9\%$, $82 \pm 9\%$ and $70 \pm 10\%$, respectively (Fig. 1a). Cumulative incidence of neutrophil recovery at day 28 was $77.3 \pm 9\%$. Notably, the amount of CD34 + cells after thawing, which is highly correlated to the number of CD34 + at cryopreservation (data not shown), was significantly associated with hematological recovery, both in univariate and multivariate analysis (Fig. 1b and Supplementary Tables II and III). NRM was $20 \pm 9\%$ (Fig. 1c): two patients died of toxicity, one of infection and one of graft

Table 1 Clinical characteristics of intrabone UCB transplants

| | | |
|--|----------------------------------|------------------|
| No. of patients | | 23 |
| Years of transplant | | 2009–2012 |
| Age | Median, range | 36 years (16–57) |
| Gender | Males, % | 9 (39%) |
| Interval diagnosis-transplant | Median, range | 10 months (4–60) |
| Diagnosis | | |
| | AML, n (%) | 16 (69.6) |
| | ALL, n (%) | 4 (17.4) |
| | CML, n (%) | 1 (4.3) |
| | NHL, n (%) | 1 (4.3) |
| | MM, n (%) | 1 (4.3) |
| Phase at transplant | | |
| | 1st Complete Remission (%) | 5 (21.7) |
| | 2nd Complete Remission (%) | 3 (13.0) |
| | >2 Complete Remission (%) | 3 (13.0) |
| | Primary Refractory (%) | 6 (26.1) |
| | Resistant Relapse (%) | 4 (17.4) |
| | Progression (for MM) (%) | 1 (4.3) |
| | Blastic Phase (for CML) (%) | 1 (4.3) |
| Previous transplant | | |
| | Autologous, n of pts (%) | 6 (26.1) |
| | Allogeneic, n of pts (%) | 3 (13.0) |
| Courses of therapy | Median, range | 4.5 months (2–7) |
| Conditioning regimen | | |
| | Cy-TBI (%) | 3 (13.0) |
| | Bu- Cy (%) | 11 (47.8) |
| | Bu- Flu-TT (%) | 9 (39.2) |
| GVHD prophylaxis | ATG-CsA-MMF (%) | 23 (100.0) |
| CMV serostatus | | |
| | Recipient Neg/Donor Neg, n (%) | 3 (13.0) |
| | Recipient Pos/Donor Neg, n (%) | 20 (87.0) |
| Donor recipient HLA matching | | |
| | 4/6, n (%) | 20 (87.0) |
| | 5/6, n (%) | 3 (13.0) |
| TNC $\times 10^7/\text{kg}$ pre thawing | Median, range | 3.04 (1.91–5.48) |
| TNC $\times 10^7/\text{kg}$ infused | Median, range | 2.06 (0.20–3.92) |
| CD34 + cells $\times 10^5/\text{kg}$ pre thawing | Median, range | 1.29 (0.12–3.46) |
| CD34 + cells $\times 10^5/\text{kg}$ infused | Median, range | 0.54 (0.23–2.90) |
| | Median, range | 25.45 (1.6–5.3) |

Table 1 (continued)

| | | |
|---|-------------------------|--------------|
| CD3 + cells $\times 10^6$ /kg infused | | |
| Vitality | Median, range | 91% (37–95%) |
| Hematologic recovery | | |
| median day to ANC $> 0.5 \times 10^9$ /L | Median day, range | 21.5 (12–38) |
| median day to platelets $> 20 \times 10^9$ /L | Median day, range | 39.5 (19–90) |
| median day to platelets $> 50 \times 10^9$ /L | Median day, range | 47 (34–150) |
| Acute GVHD | Grade I, <i>n</i> (%) | 4 (17.4) |
| | Grade II, <i>n</i> (%) | 2 (8.7) |
| | Grade III, <i>n</i> (%) | 1 (4.3) |
| | Grade IV, <i>n</i> (%) | — |
| Chronic GVHD | Limited, <i>n</i> (%) | 3 (13.0) |
| | Extensive, <i>n</i> (%) | 1 (4.3) |

AML Acute Myeloid Leukemia, *ALL* Acute Lymphoblastic Leukemia, *CML* Chronic Myeloid Leukemia, *NHL* Non-Hodgkin Lymphoma, *MM* Multiple Myeloma, *Cy* Cyclophosphamide, *TBI* total body irradiation, given unfractionated at low dose-rate, *Bu* i.v. busulfan, total dose 12.8 mg/kg, *Flu* fludarabine, total dose 150 mg/m², *TT* thiotepa, total dose 10 mg/kg, *ATG* antilymphocyte globulin (Grafalon, NEOVII, Germany), total dose 15–30 mg/kg from day –6 to day –2, *CsA* Ciclosporin-A, given according to early post transplant serum level between 200 and 300 ng/ml, *MMF* micophenolate mofetile, 30 mg/kg bid from +1 to +28, *TNC* total nucleated cells, *ANC* absolute neutrophil count, *GVHD* graft vs. host disease, *CMV* cytomegalovirus

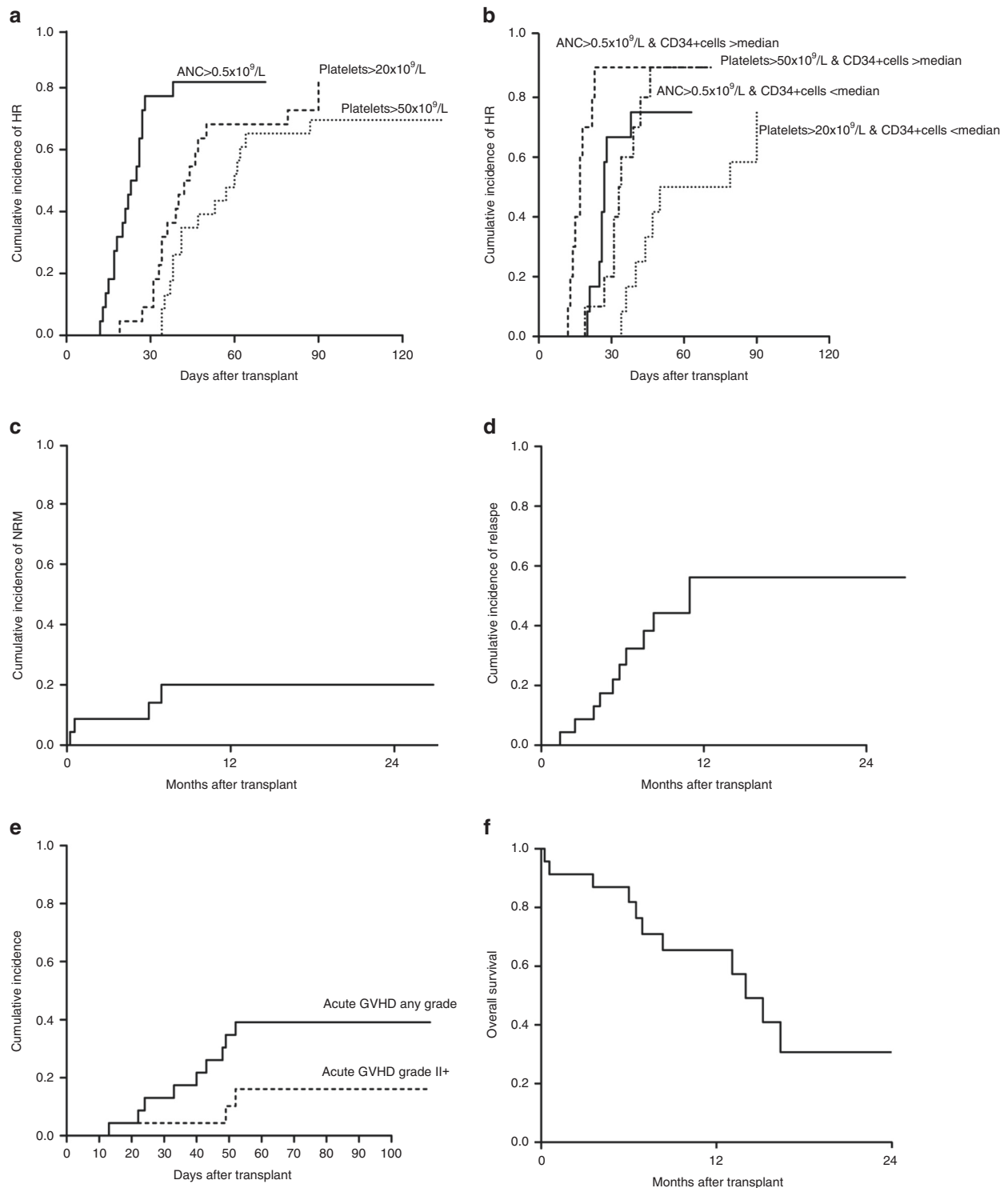
failure. CMV reactivation occurred in 13/23 patients with a median onset at day +33 (range 13–90 days), but no CMV disease was recorded. Relapse incidence was $56 \pm 10\%$ (patients in early disease only 21%) (Fig. 1d). aGVHD occurrence is indicated in Fig. 1e: 16 patients had no GVHD, four patients had grade I, two grade II and one grade III (Table I). Only one patient developed extensive chronic GVHD with a median follow up of 45 months. Time to CsA discontinuation was 145 days (range 51–401 days). Any of the clinical factors analyzed (phase, age, ATLG dose, infused total nucleated cells, as well as CD34 + and CD3 + cells) was found to be associated with GVHD occurrence (Supplementary table II).

Relapse incidence and overall survival (Fig. 1f) were not significantly associated with any of the analyzed factors (Supplementary Tables II and III). The immune reconstitution following UCB transplant is reported in Fig. 2. Numbers of CD4 + and CD8 + T cells were < 50 /ul at 1 month after transplant then increased to > 100 /ul within 3 months. Recovery of B cells and NK cells was rapid and full within 3 months after transplant. A dose dependent impairment of CD3 +, CD4 + and CD8 + cell recovery but similar CD56 + and CD19 + counts was observed in patients receiving 30 mg/Kg of ATLG compared to those receiving 15 mg/Kg. To gain an insight into the biology of

IB-UCB Transplant, we reasoned that delivering HSC directly into the physiological IB micro-environment could effectively maintain hypoxic signaling thus preserving the engraftment potential [10, 13, 17]. To this purpose we isolated CD34 + under BM-mimicking hypoxic conditions (7% pO₂ [16] and see supplementary Figure 1a). We observed that the expression level of c-Mpl was significantly higher when CD34 + cells were processed under controlled hypoxia (7% pO₂) compared to bench-work atmospheric pO₂ (Supplementary Figure 1B). Accordingly, the percentage of c-Mpl + CD34 + cells in BM samples was higher under hypoxic than atmospheric pO₂ (Supplementary Figure 1C). We thus reasoned that the processing of BM samples under 7% pO₂ BM-mimicking pO₂ may preserve the in vivo expression level of c-Mpl, and thus may allow to evaluate its association with parameters of hematopoietic recovery. Following this reasoning, we performed the separation of CD34 + cells from BM aspirates of eleven patients at three time points (day +10, +20, +30) under 7% pO₂. Then, CD34 + cells were assessed for the expression of three stem cell regulatory genes, namely: c-Mpl, CXCR4 and Notch1. We found that day +10, but neither day +20 nor day +30, c-Mpl mRNA level was positively correlated with ANC and platelet recovery (Fig. 3a, b). Conversely, day +10, +20, +30 CXCR4 and Notch1 mRNA did not correlate with platelets or ANC recovery (Supplementary Figure 2). The positive correlation between c-Mpl mRNA expression and the hematological recovery was confirmed by multivariate analysis for both ANC recovery (RR = 11.3, CI 95% 1.6–78.6 $p = 0.014$) and platelet recovery $> 20 \times 10^9$ /L (RR = 8.8, CI 95% 1.3–60.8, $p = 0.027$). Moreover, day +10 c-Mpl mRNA level was correlated with the amount of CD34 + cells at day +30 (Fig. 3c). With the limitation of the small sample size of the study, these data are supportive that day +10 c-Mpl expression is significantly associated with both hematologic recovery and the capability of in vivo expansion of HSC after transplant.

Discussion

The use of UCB transplant has significantly decreased in the last years [18, 19], with important differences across countries, despite its performance has never been demonstrated inferior to other transplant types which are now fastly growing. In the present study, we confirmed the clinical results of previous studies on IB-UCB transplant [9, 20], in terms of engraftment, platelet recovery and low incidence of GVHD. The cohort of the study was represented by very advanced patients, as displayed by the relatively high number of second transplants and refractory diseases. The negative patient selection importantly reduced



the capacity of the study to unravel the anti-leukemic effect of UCB transplant, which is clearly stronger in MRD positive patients than in those with high burden of disease at transplant. Notably all the patients who had been transplanted in CR maintained the remission status after transplant and three of those transplanted with active disease

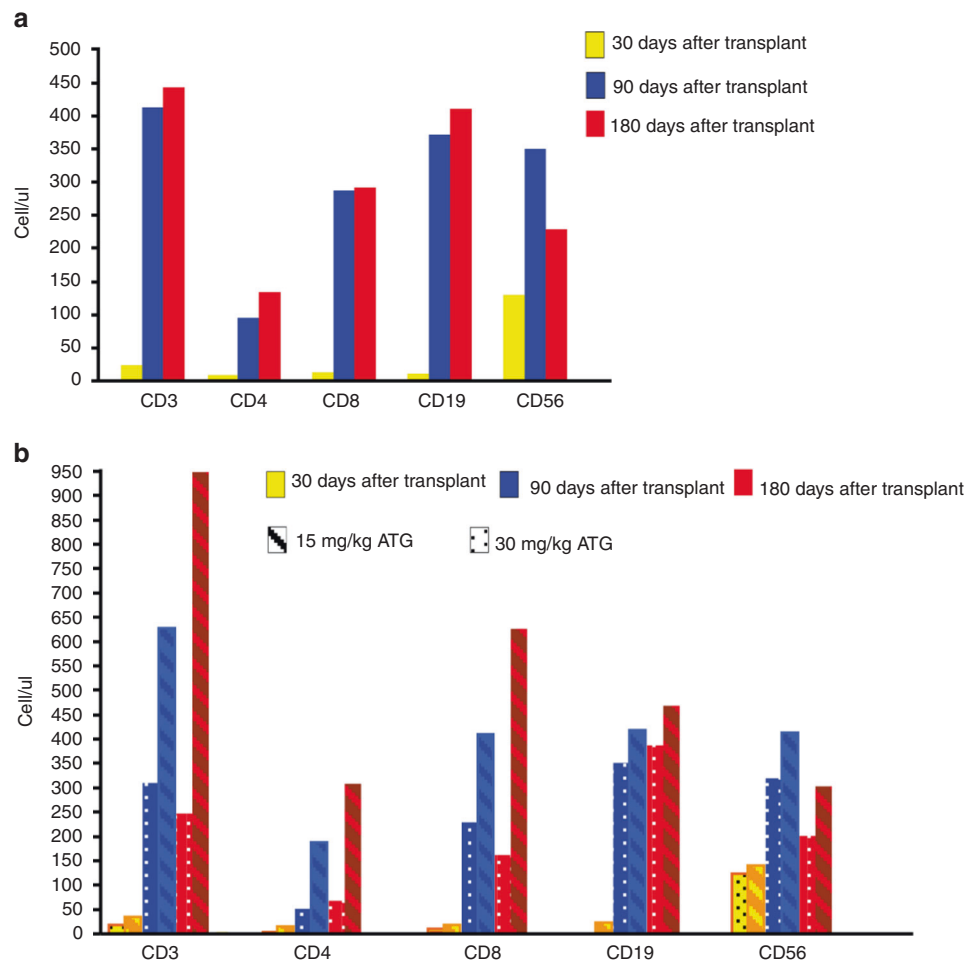
were still in complete remission at last follow up. Although the highly pre-transplant treatments, NRM in the study was relatively low, with reduced risk of graft failure and GVHD. In this study we performed IB-UCB transplant using low dose ATLG and we found a satisfactory immune reconstitution, leading to acceptable infective morbidity and

◀ **Fig. 1** **a** Cumulative incidence of hematologic recovery (HR). Times to neutrophil (ANC) and platelet (Plt) recovery were defined as time from transplant to $>0.5 \times 10^9/L$ or, $20 \times 10^9/L$ and $50 \times 10^9/L$, respectively. The cumulative incidence of ANC and platelet recovery were calculated counting deaths from other causes as competing risk. **b** Cumulative incidence of HR according to CD34 + cells. The hematologic recovery was significantly associated with CD34 + cells (ANC $>0.5 \times 10^9/L$ $p = 0.04$; Platelet $>0.5 \times 10^9/L$ $p = 0.07$). Median CD34 + cells infused was $0.54 \times 10^5/kg$. **c** Cumulative incidence of non relapse mortality (NRM). The cumulative incidence of NRM was $20 \pm 9\%$ and was calculated counting deaths from other causes as competing risk. **d** Cumulative incidence of relapse/progression. Cumulative incidence of relapse/progression was $56 \pm 10\%$. In the study protocol, therapy after relapse/progression was free. Two relapses were treated with a further IB-UCB transplant: one was a by phenotypic refractory Acute Leukemia, who achieved a stable complete remission lasting 9 months, then he died for leukemia. The second was a Chronic Myeloid Leukemia patient transplanted in blastic phase, relapsing after 6 months from IB-UCB transplant with hematologic relapse, central nervous system involvement and a solid mass in the breast, which completely responded to Ponatinib. She received a second IB-UCB transplant achieving a further complete remission lasting 5 months; however relapse occurred again resulting in death. **e** Cumulative incidence of acute GVHD, **f** Overall survival

transplant [21–24], due to better CD8 + T cells recovery. Although ATLG increases the risk of CMV infection, the rate of CMV reactivation in this study was similar to other reports [21, 25–27], but none of the patients either developed a CMV disease or died for CMV infection.

Owing to the study design, we are not able to ascertain whether the low incidence of GVHD depends upon the use of polyclonal serum or upon the route of transplant. The use of ATLG in the UCB transplant is still a matter of debate [21, 22, 24, 28]. Recently a pharmaco-kinetic/dynamic approach to ATLG dosing has been proposed, underpinning the importance of target cells burden and ATLG infusion [21–23, 29] timing. The ATLG brand and schedule administered to the IB-UCB patients in this trial is different from other published trials [21–24, 28, 29] due to its early timing (from –6 to –2 days) and dose (15–30 mg/Kg), which is expected to exert a strong anti-rejection rather than anti-GVHD activity. Nevertheless, the present ATLG schedule is still active in reducing GVHD [30, 31], without

Fig. 2 **a** Immune reconstitution after IB-UCB transplant. Recovery of CD3 + , CD4 + , CD8 + , CD19 + and CD56 + cells from peripheral blood samples obtained after 30, 90 and 180 days after IB-UCB transplant. **b** Immune reconstitution after IB-UCB transplant according to ATLG dose. Immune reconstitution from peripheral blood samples according to ATLG dose: patients receiving higher ATLG dose (30 mg/kg) show a more impaired CD3 + , CD4 + and CD8 + cells recovery than that from patients receiving lower dose (15 mg/kg); CD19 + and CD56 + cells recovery didn't seem to be affected by ATLG dose



mortality. In particular, CD3 + T cells recovery was faster than previously described after intra-venous standard UCB

increasing infectious morbidity and mortality. However, our study confirms a dose-dependent effect of ATLG on T-cells

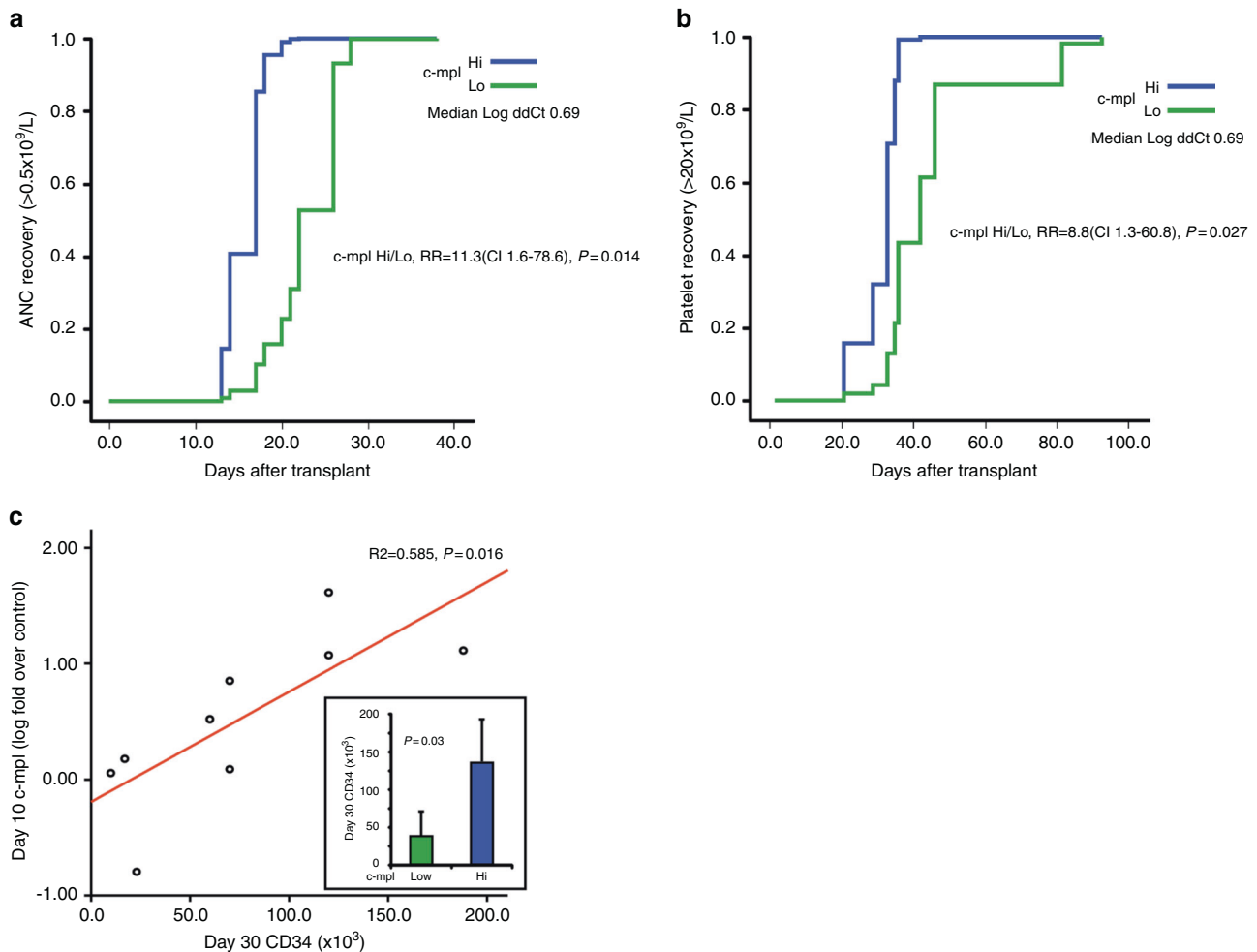


Fig. 3 **a** Cumulative incidence of neutrophil recovery according to c-Mpl level evaluated on day +10 in BM aspirates CD34+ cells processed under hypoxic condition. Time to ANC > $0.5 \times 10^9/L$ according to +10 BM-derived CD34+ cells c-Mpl mRNA level (low/high classified respect to the median value of Log ddCT:0.69). **b** Cumulative incidence of platelet recovery according to c-Mpl level evaluated on day +10 in BM aspirates CD34+ cells. Time to platelet > $20 \times$

$10^9/L$ according to +10 BM-derived CD34+ cells c-Mpl mRNA level (low/high classified respect to the median value of Log ddCT:0.69). **c** Regression analysis of c-Mpl level at +10 day vs amount of CD34+ cells at +30 day. In the Box window the expression of Low vs Hi of c-Mpl is significantly associated with the capability of in vivo of CD34+ cells measured by the amount of CD34+ cells at day +30. (Low/hi were classified as below/above the median value of Log ddCT:0.69)

recovery after UCB transplant as previously reported [21] (see Fig. 2).

Despite the good clinical performance of IB-UCB, new biological insight regarding the benefit of directly delivering HSC into the bone marrow niche has been provided. In this regard, a significant association between the hematologic (platelets) recovery and c-Mpl mRNA level, measured in CD34+ cells recovered on day +10 after transplant, was found. Such c-Mpl expression level in CD34+ cells at day +10 also positively correlates with the amount of CD34+ cells on day +30 after IB-UCB transplant. The c-Mpl pathway is a pivotal regulator of HSC self-renewal as well as thrombopoiesis, and is currently regarded as a major target to design hematopoietic-reconstituting drugs [10, 32]. Interestingly, to perform the above observation, we

processed CD34+ under controlled hypoxia, which resembles that of BM aspirates (see supplementary figure 1A and ref. [16]). Regarding the in vivo oxygen tension it is worth noting that pO_2 in the venous blood is about 11% which is higher to that found in the BM aspirates (about 7%) [16]. However, the pO_2 in the BM reaches extremely low levels, up to less than 1% in the endosteal niche [32, 33]. Accordingly, in vitro hypoxia improves the marrow repopulation efficiency of human UCB-HSC [15]. In line with these data, exposure to high oxygen content under hyperbaric conditions reduces the UCB-HSC proliferation, differentiation capability [34]. Hence, hypoxia is one of the most important micro-environmental factors that maintains and promotes HSC functional status [13, 17, 33–35]. These data suggest that out of the hypoxic BM niche, HSC lose

part of their c-Mpl-driven HSC potential, due to exposure to atmospheric oxygen tension: the phenomenon may occur during ex vivo processing, as well as after intra-venous administration. On the contrary, chronic inflammation, a widely acknowledged age related condition [36], has been recently reported to negatively impinge upon c-Mpl signaling pathway activation [37]. Our data suggest that one of the benefits of the IB route of CD34 + cells injection may be the preservation of c-Mpl expression. Owing to the pivotal role of c-Mpl in thrombopoiesis, the above observations may also contribute to explain the remarkable recovery of platelets that occur in the IB-UCB transplant. Noteworthy, the quality and the speed of platelet engraftment have been already demonstrated to be predictive markers of good outcome after allotransplant [38]. Anyway, the fast platelet recovery after IB-UCB transplant without any ex vivo manipulation was very similar to the original report from Frassoni et al. [9].

The choice to perform UCB infusion in operating room, albeit it added up additional costs for the transplant procedure, was based on safety reasons and on the report by Frassoni et al. [9], which was the only study published at the time of protocol approval. However, the feasibility of IB infusion at bedside was subsequently reported by Murata et al. [39], thus improving the cost effectiveness of the IB procedure.

In this study, the amount of infused CD34 + cells correlates with hematological recovery and survival. Notably, since thawed CD34 + are highly correlated with CD34 + cells at cryopreservation, this latter maintains its role in the choice of the best UCB unit.

The major limitations of this study are the small size and the poor prognosis of the enrolled patients: both factors can impair the anti-leukemic effect of UCB.

Since that the number of infused CD34 + cells is substantially lower than that reported in the literature [40], it can be speculated that the high engraftment performance here reported may depend upon the IB route of infusion. However, because the number of infused TNC is similar to the standard UCB transplant, we cannot exclude that our results could be achieved by i.v. infusion.

However, the acceptable NRM and the fast platelet recovery justify a further investigation of IB transplant recruiting patients with more favorable prognosis. The correlation between the hematological recovery and c-Mpl expression, underlying the biological link with the hypoxic driven pathways occurring in the microenvironment after transplant, need also to be expanded to understand the molecular pattern linking c-Mpl pathway, hypoxia and hematopoietic recovery [41].

Acknowledgements We thank Rita Bertoni and Antonella Orlando for the technical assistance. This work has been supported by Bologna

AIL (Italian Association against Leukemia, Lymphoma and Myeloma), Roberto and Cornelia Pallotti Legacy for Cancer Research (University of Bologna) to M.B., and REUSE with Love ONLUS, Bologna, Italy.

Compliance with ethical standards

Conflict of interest The authors declare that they have no conflict of interest.

Open Access This article is licensed under a Creative Commons Attribution 4.0 International License, which permits use, sharing, adaptation, distribution and reproduction in any medium or format, as long as you give appropriate credit to the original author(s) and the source, provide a link to the Creative Commons license, and indicate if changes were made. The images or other third party material in this article are included in the article's Creative Commons license, unless indicated otherwise in a credit line to the material. If material is not included in the article's Creative Commons license and your intended use is not permitted by statutory regulation or exceeds the permitted use, you will need to obtain permission directly from the copyright holder. To view a copy of this license, visit <http://creativecommons.org/licenses/by/4.0/>.

References

1. Milano F, Gooley F, Wood B, Woolfrey A, Flowers ME, Doney K, et al. Cord-blood transplantation in patients with minimal residual disease. *N Engl J Med*. 2016;375:944–53.
2. Wagner JE, Eapen M, Carter S, Wang Y, Schultz KR, Wall DA, et al. One-unit versus two-unit cord-blood transplantation for hematologic cancers. *N Engl J Med*. 2014;371:1685–94.
3. Shpall EJ, Quinones R, Giller R, Zeng C, Baron AE, Jones RB, et al. Transplantation of ex vivo expanded cord blood. *Biol Blood Marrow Transplant*. 2002;8:368–76.
4. Delaney C, Heimfeld S, Brashem-Stein C, Voorhies H, Ronald L, Manger RL, et al. Notch-mediated expansion of human cord blood progenitor cells capable of rapid myeloid reconstitution. *Nat Med*. 2010;16:232–36.
5. Horwitz ME, Chao NJ, Rizzieri DA, Long GD, Sullivan KM, Gasparetto C, et al. Umbilical cord blood expansion with nicotinamide provides long-term multilineage engraftment. *J Clin Invest*. 2014;124:3121–28.
6. de Lima M, McNiece I, Robinson SN, Munsell M, Eapen M, Horowitz M, et al. Cord-blood engraftment with ex vivo mesenchymal-cell co-culture. *N Engl J Med*. 2012;367:2305–15.
7. Eapen M, Klein JP, Sanz GF, Spellman S, Ruggeri A, Anasetti C, et al. Effect of donor-recipient HLA matching at HLA A, B, C and DRB1 on outcomes after umbilical-cord blood transplantation for leukaemia and myelodysplastic syndrome: a retrospective analysis. *Lancet Oncol*. 2011;12:1214–21.
8. Brunstein CG, Noreen H, DeFor TE, Maurer D, Miller JS, Wagner JE. Anti-HLA antibodies in double umbilical cord blood transplantation. *Biol Blood Marrow Transplant*. 2011;17:1704–08.
9. Frassoni F, Gualandi F, Podestà M, Raiola AM, Ibatici A, Piaggio G, et al. Direct intrabone transplant of unrelated cord-blood cells in acute leukaemia: a phase I/II study. *Lancet Oncol*. 2008;9:831–39.
10. Yoshihara H, Arai F, Hosokawa K, Hagiwara T, Takubo K, Nakamura Y, et al. Thrombopoietin/MPL signaling regulates hematopoietic stem cell quiescence and interaction with the osteoblastic niche. *Cell Stem Cell*. 2007;1:685–97.
11. Portillo V, Chadwick N, Lloyd R, Jackson D, Buckle AM. Cell-surface Notch1 expression identifies a primitive phenotype within

- CD34 + CD38- haematopoietic cells. *Eur J Haematol.* 2014;92:26–34.
12. Nie Y, Han YC, Zou YR. CXCR4 is required for the quiescence of primitive hematopoietic cells. *J Exp Med.* 2008;205:777–83.
 13. Zhang CC, Sadek HA. Hypoxia and metabolic properties of hematopoietic stem cells. *Antioxid Redox Signal.* 2014;20:1891–901.
 14. Hanoun M, Frenette PS. This niche is a maze; an amazing niche. *Cell Stem Cell.* 2013;12:391–92.
 15. Roy S, Tripathy M, Mathur N, Jain A, Mukhopadhyay A. Hypoxia improves expansion potential of human cord blood-derived hematopoietic stem cells and marrow repopulation efficiency. *Eur J Haematol.* 2012;88:396–405.
 16. Ishikawa Y, Ito T. Kinetics of hemopoietic stem cells in a hypoxic culture. *Eur J Haematol.* 1988;40:26–9.
 17. Cipolleschi MG, Dello Sbarba P, Olivotto M. The role of hypoxia in the maintenance of hematopoietic stem cells. *Blood.* 1993;82:2031–37.
 18. Passweg JR, Baldomero H, Bader P, Bonini C, Cesaro S, Dreger P. Hematopoietic stem cell transplantation in Europe 2014: more than 40 000 transplants annually. *Bone Marrow Transplant.* 2016;51:786–92.
 19. Ruggeri A, Labopin M, Sanz G, Piemontese S, Arcese W, Bacigalupo A, et al. Comparison of outcomes after unrelated cord blood and unmanipulated haploidentical stem cell transplantation in adults with acute leukemia. *Leukemia.* 2015;29:1891–900.
 20. Rocha V, Labopin M, Ruggeri A, Podestà M, Gallamini A, Bonifazi F, et al. Unrelated cord blood transplantation: outcomes after single-unit intrabone injection compared with double-unit intravenous injection in patients with hematological malignancies. *Transplantation.* 2013;95:1284–91.
 21. Lindemans CA, Chiesa R, Amrolia PJ, Rao K, Nikolajeva O, de Wildt A, et al. Impact of thymoglobulin prior to pediatric unrelated umbilical cord blood transplantation on immune reconstitution and clinical outcome. *Blood.* 2014;123:126–32.
 22. Admiraal R, van Kesteren C, Jol-van der Zijde CM, Lankester AC, Bierings MB, Egberts TC, et al. Association between anti-thymocyte globulin exposure and CD4 + immune reconstitution in paediatric haemopoietic cell transplantation: a multicentre, retrospective pharmacodynamic cohort analysis. *Lancet Haematol.* 2015;2:194–203.
 23. Admiraal R, Lindemans CA, van Kesteren C, Bierings MB, Versluis AB, Nierkens S. Excellent T-cell reconstitution and survival provided ATLG exposure is low or absent after pediatric cord blood transplantation. *Blood.* 2016;128:2734–41.
 24. Pascal L, Tucunduva L, Ruggeri A, Blaise D, Ceballos P, Chevallier P, et al. Impact of ATLG-containing reduced-intensity conditioning after single- or double-unit allogeneic cord blood transplantation. *Blood.* 2015;126:1027–32.
 25. Dahi PB, Perales MA, Devlin SM, Olson A, Lubin M, Gonzales AM, et al. Incidence, nature and mortality of cytomegalovirus infection after double-unit cord blood transplant. *Leuk Lymphoma.* 2015;56:1799–805.
 26. Castillo N, García-Cadenas I, Barba P, Canals C, Díaz-Heredia C, Martino R, et al. Early and long-term impaired T lymphocyte immune reconstitution after cord blood transplantation with antithymocyte globulin. *Biol Blood Marrow Transplant.* 2017;23:491–97.
 27. Ramanathan M, Teira P, Battiwalla M, Barrett J, Ahn KW, Chen M, et al. Impact of early CMV reactivation in cord blood stem cell recipients in the current era. *Bone Marrow Transplant.* 2016;51:1113–20.
 28. De Konig C, Admiraal R, Nierkens S, Boelens JJ. Immune reconstitution and outcomes after conditioning with anti-thymocyte-globulin in unrelated cord blood transplantation; the good, the bad, and the ugly. *Stem Cell Investig.* 2017;4:38 <https://doi.org/10.21037/sci.2017.05.02>. eCollection 2017
 29. Admiraal R, Nierkens S, de Witte MA, Petersen EJ, Fleurke GJ, Verrest L, et al. Association between anti-thymocyte globulin exposure and survival outcomes in adult unrelated haemopoietic cell transplantation: a multicentre, retrospective, pharmacodynamic cohort analysis. *Lancet Haematol.* 2017;4:e183–91. [https://doi.org/10.1016/S2352-3026\(17\)30029-7](https://doi.org/10.1016/S2352-3026(17)30029-7).
 30. Bonifazi F, Bandini G, Arpinati M, Tolomelli G, Stanzani M, Motta MR, et al. Intensification of GVHD prophylaxis with low-dose ATLG-F before allogeneic PBSC transplantation from HLA-identical siblings in adult patients with hematological malignancies: results from a retrospective analysis. *Bone Marrow Transplant.* 2012;47:1105–11.
 31. Kröger N, Solano C, Wolschke C, Bandini G, Patriarca F, Pini M, et al. Antilymphocyte globulin for prevention of chronic graft-versus-host disease. *N Engl J Med.* 2016;374:43–53.
 32. Suda T, Takubo K, Semenza GL. Metabolic regulation of hematopoietic stem cells in the hypoxic niche. *Cell Stem Cell.* 2011;9:298–310.
 33. Spencer JA, Ferraro F, Roussakis E, Klein A, Wu J, Runnels JM, et al. Direct measurement of local oxygen concentration in the bone marrow of live animals. *Nature.* 2014;508:269–73.
 34. Cheung KY, Berry A, Li D, Aljitali OS. Hyperbaric oxygen treatment effects on in vitro cultured umbilical cord blood CD34 + cells. *Cytotherapy.* 2018;20:87–94.
 35. Aihara A, Koike T, Abe N, Nakamura S, Sawaguchi A, et al. Novel TPO receptor agonist TA-316 contributes to platelet biogenesis from human iPS cells. *Blood Adv.* 2017;1:468–76.
 36. Franceschi C, Bonafè M, Valensin S, Olivieri F, De Luca M, Ottaviani E, et al. Inflamm-aging. An evolutionary perspective on immunosenescence. *Ann N Y Acad Sci.* 2000;908:244–54.
 37. Alvarado LJ, Andreoni A, Huntsman HD, Cheng H, Knutson HR, Larochelle Andre. Heterodimerization of TPO and IFN γ impairs human hematopoietic stem/progenitor cell signaling and survival in chronic inflammation. *Blood.* 2017;130:4.
 38. Verneris MR, Brunstein CG, Barker J, MacMillan ML, DeFor T, McKenna DH, et al. Relapse risk after umbilical cord blood transplantation: enhanced graft-versus-leukemia effect in recipients of 2 units. *Blood.* 2009;114:4293–99.
 39. Murata M, Maeda Y, Masuko M, Onishi Y, Endo T, Terakura S, et al. Phase II study of intrabone single unit cord blood transplantation for hematological malignancies. *Cancer Sci.* 2017;108:1634–39.
 40. Wagner JE, Barker JN, DeFor TE, Baker KS, Blazar BR, Eide C, et al. Transplantation of unrelated donor umbilical cord blood in 102 patients with malignant and nonmalignant diseases: influence of CD34 cell dose and HLA disparity on treatment-related mortality and survival. *Blood.* 2002;100:1611–18.
 41. Chen J, Kang JG, Keyvanfar K, Young NS, Hwang PM. Long-term adaptation to hypoxia preserves hematopoietic stem cell function. *Exp Hematol.* 2016;44:866–73e4.